

## The best DIY amplifier, now made easy!



### Your NC400 Mono kit contains:

- 1x NC400
- 1x SMPS600N400
- 1x Case Hypex DIY mono
- 1x Mains input + ON/OFF switch
- 2x 5 AT fuse
- 1x Binding posts (red and black)
- 1x XLR to NC400 cable + PCB-XLR chassis
- 1x Speaker wires (twisted red/black)
- 1x Internal mains wires
- 1x Protective earth cable
- This manual

Congratulations on the purchase of your NC400 Mono kit. Soon you will experience the highest quality of music reproduction and best of all: you can build it yourself!

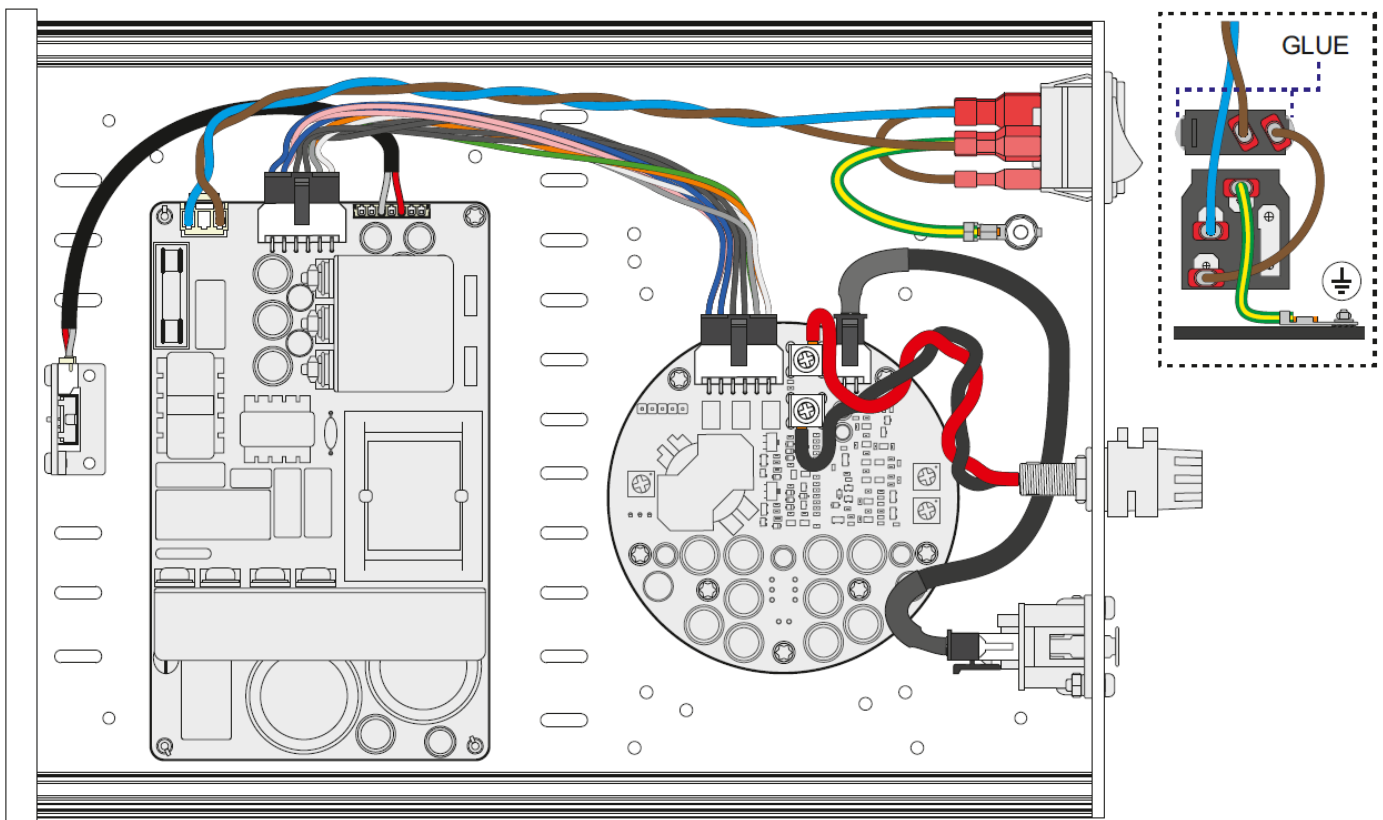
To ensure the best performance please read this manual first. It contains tips and tricks to guide you through the process of building your own NC400 mono block.

**Warning: This kit operates at mains voltage and carries hazardous voltages at accessible parts. For safety instructions refer to the datasheets on our website.**

### What you need to build it:

- Screwdriver PH and small FLAT head
- 2,5mm Allen key
- Cutting pliers
- Optional (supply by yourself):
  - Glue to fix mains input and switch

Please check the content of your kit before you start.

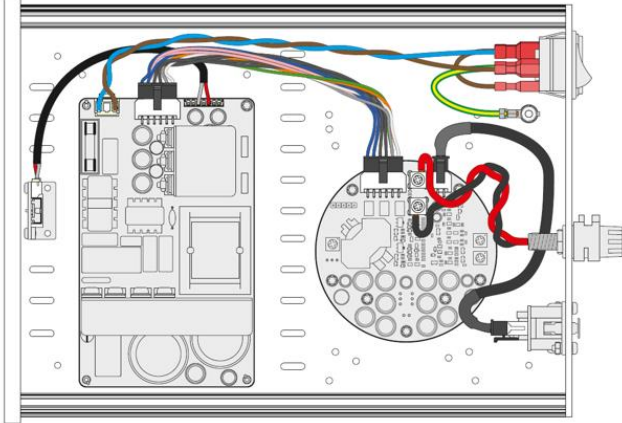


Before your start assembling this kit please mind the following:

We expect you have basic knowledge of electronics and you are aware of the dangers related to electricity.

If you do not feel confident, please ask someone who has this knowledge to assist you.

## 1: Place amplifier and supply



Position the amplifier and power supply in your enclosure. The cable connections will be made later. Use the spacers and bolts supplied with the kit.

## 2: Place the binding post and XLR



Mount the NC400 signal wire according to the drawing, use the screws provided with the kit.

Binding post:

The red binding post refers to the positive (+) speaker output and the black binding post refers to the negative (-) speaker output. Mount the binding posts accordingly. Make sure the posts are electrically insulated from the amp case.

## 3: Connecting the mains to the SMPS

- Mount as shown on the front page of this document
- Place fuse in its holder
- Connect ground correctly
- Mount the ground with the M4 bolt to the bottom panel
- Glue connectors and switch

### 3.1: Connecting LED

- Connect the cable between the small LED board and the power supply
- Fits only one way

### 3.2: Fixing the feet

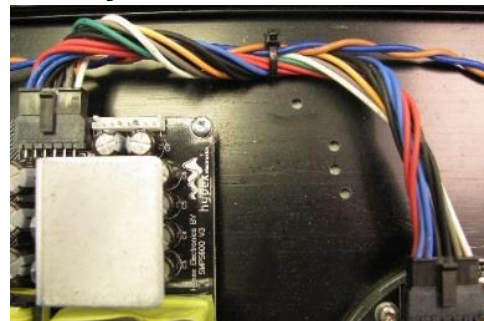
- Fix the feet with a 2,5mm Allen key.

### 3.3: Mounting front and back panels

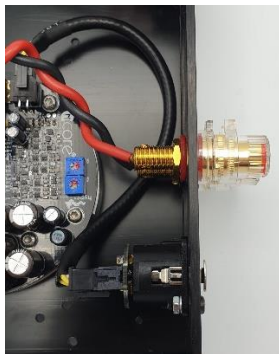
- Use the screws and washers provided with the kit. Make sure the spring washers are placed between all panels.

## 4: Connecting the SMPS to the NC400

Mount the supply cable like you can see in the picture in step 1. The cable for the NC400 can only be placed in one way, please do not try to force it, it either fits or is placed wrong! Use a cable tie to fix the wires together.



## 5: Connecting audio wires to NC400



- Connect LS+ (red) to the red binding post.
- Connect LS- (black) to the black binding post.
  - optional: insulate with shrink sleeve.

## 6: Check your work!

Before you power up your amplifier you should check your work.

- Check if you have followed the previous instructions correctly.
- Make sure all connections are made according to the instructions.
- Make sure all cables and wires have room to spare, there should be no tension on the cables and wires!
- Are all cables securely connected?
- Tip: You can use cable ties to bind cables together.
- All screws should be fixed. But remember, fixed is fixed. Do not overdo it, you risk damaging your material.
- Make sure there is no debris in the case left. Clean it carefully if necessary.

For further details please refer to our website: [www.hypex.nl](http://www.hypex.nl)

**Enjoy your new amplifier!**

**The Hypex Crew**